

## DVD RECEIVER

### KST-MV000 SERIES

#### APPLICATION :

High quality single pack FM/MW tuner module and super compact size which ideal for HiFi receive Amp and DVD Receive Amp. System

#### FEATURES :

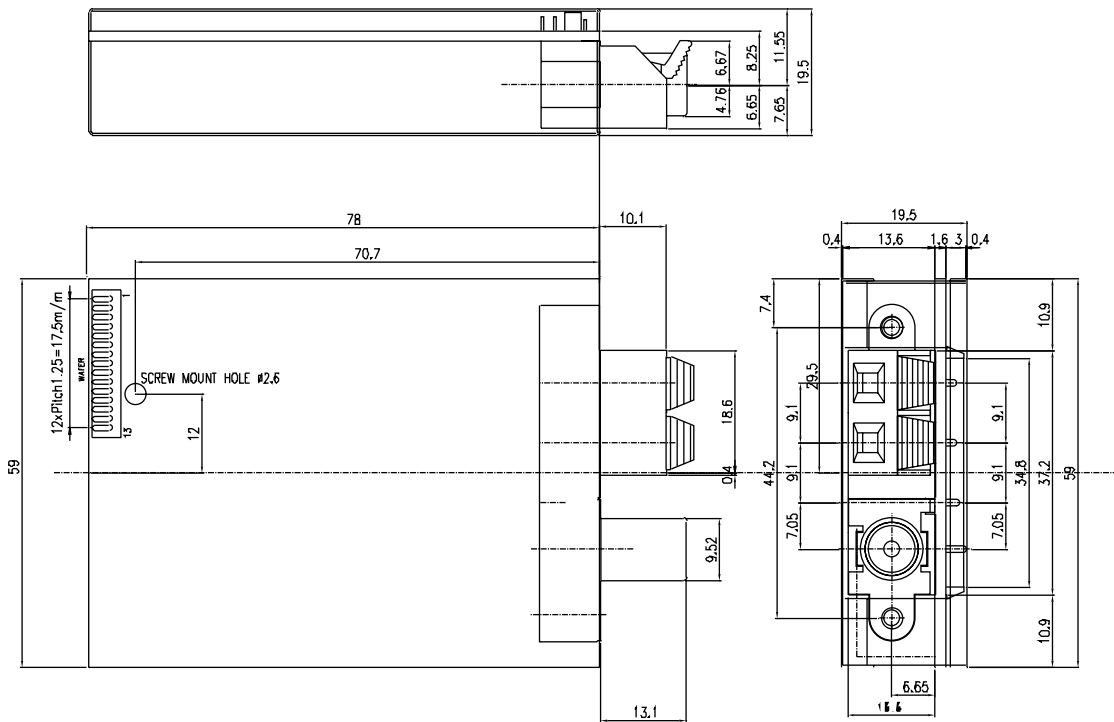
- Fully shield structure and antenna connector makes the unit highly resistant to external noise. Qualified standardization enables more efficient use of set space
- With SD/SM and IF Counter for digital tuning System Application
- Applicable for the function of FM, F/E, IF, MPX, AM DET. and PLL (LC72131), DRS decoder.
- Upper Side Band Super Heterodyne System and Down Side Band Super Heterodyne System
- Can be made uniform in shape and pin compatible with any other company's units
- Compatible with New Fcc and CE rule content



KST-MV114LA1

### KST-MV114LA1

COUNTRY	EUROPE	AREA USING	DVD
TUNER(GANG)	4G	BAND (波段)	3 BAND
NO.	ITEMS	SPECIFICATION	
		A M	F M
1	LOCAL OSC (高頻接收器局部振盪)	ABOVE THE RECEIVING FREQUENCY	
2	FREQUENCY COVER RANGE (頻率覆蓋範圍)	MW : 522 - 1611KHz LW : 144 - 288KHz	87.5 - 108.0 MHz
3	INTERMEDIATE FREQUENCY (中心頻率)	450 KHz	10.7 MHz
4	STANDARD SUPPLY VOLTAGE (標準工作電壓)	12.0 +/- 0.5V	
5	CURRENT DRAIN (工作電流)	80 +/- 20mA	
6	FM ANTENNA INPUT IMPEDANCE (FM天線輸入阻抗)	75 ohm UNBALANCED	
7	AM LOOP ANTENNA INDUCTANCE (環形天線)	18uH (50ohm)	
8	F M	S/N RATIO (信噪比額定)	60dB MIN
9		IMAGE REJECTION (鏡像抑制比)	70dB MIN
10		USABLE SENS (使用感度)	12dBu MAX
11		AUTO STOP SENS (自動鎖台靈敏度)	18 - 28dBu
12	AF OUTPUT LEVEL (音頻額定輸出電壓)	500 - 700mV	
13	M W	S/N RATIO (信噪比額定)	40dB MIN
14		IMAGE REJECTION (鏡像抑制比)	30dB MIN
15		USABLE SENS (使用感度)	60dBu MAX
16		AUTO STOP SENS (自動鎖台靈敏度)	45 - 65dBu
17	AF OUTPUT LEVEL (音頻額定輸出電壓)	115 - 215mV	
18	L W	S/N RATIO (信噪比額定)	30dB MIN
19		IMAGE REJECTION (鏡像抑制比)	25dB MIN
20		USABLE SENS (使用感度)	68dBu MAX
21		AUTO STOP SENS (自動鎖台靈敏度)	55 - 75dBu

**KST-MV114LA1**


EXTNAL TERMINAL	
1	TUNED
2	STERED
3	VCC 12V
4	L OUT
5	GND
6	R OUT
7	PLL CE
8	PLL DI
9	PLL CLK
10	PLL DO
11	D-GND
12	RDS CLK
13	RDS DATA

**KST-MV000 SERIES**

No.	KSE Name	L x W x D	Receiving Frequency		Supply Voltage	Gang	RDS	Filter	International Approval					Connector Type			De-Emphasis	
			FM	AM					Fcc	OIRT	CE	Japan	Others	W	S	A	75US	50US
●	MV000M																	
1	KST-MV000MA0-3	78.0 x 59.0 x 19.5mm	87.5-108.0MHz	MW:520-1720 KHz	12.0+/-0.5V	2G		✓									✓	✓
●	MV001M																	
2	KST-MV001MA0-3	78.0 x 59.0 x 19.5mm	87.5-108.0MHz	MW:520-1720 KHz	12.0+/-0.5V	3G		✓									✓	✓
●	MV004M																	
3	KST-MV004MA1-3	78.0 x 59.0 x 19.5mm	87.5-108.0MHz	MW:522-1611 KHz	12.0+/-0.5V	4G				✓							✓	✓
●	MV011M																	
4	KST-MV011MA0-3	78.0 x 59.0 x 19.5mm	87.5-108.0MHz	MW:520-1720 KHz	12.0+/-0.5V	3G	✓	✓									✓	✓
●	MV014M																	
5	KST-MV014MA1-3	78.0 x 59.0 x 19.5mm	87.5-108.0MHz	MW:522-1611 KHz	12.0+/-0.5V	4G	✓			✓							✓	✓
●	MV015M																	
6	KST-MV015MA1-3	78.0 x 59.0 x 19.5mm	76.0-90.0MHz	MW:522-1629KHz	12.0+/-0.5V	3G	✓				✓						✓	✓
●	MV016M																	
7	KST-MV016MA1-3	78.0 x 59.0 x 19.5mm	76.0-108.0MHz	MW:522-1629 KHz	12.0+/-0.5V	3G	✓				✓						✓	✓
●	MV012L																	
8	KST-MV012LA1-3	78.0 x 59.0 x 19.5mm	64.0-108.0MHz	MW:522-1611 KHz LW:144-288 KHz	12.0+/-0.5V	3G	✓		✓								✓	✓
●	MV112L																	
9	KST-MV112LA1-3	78.0 x 59.0 x 19.5mm	64.0-108.0MHz	MW:522-1611 KHz LW:144-288 KHz	12.0+/-0.5V	3G	✓	✓		✓							✓	✓
●	MV114L																	
10	KST-MV114LA1-3	78.0 x 59.0 x 19.5mm	87.5-108.0MHz	MW:522-1611 KHz LW:144-288 KHz	12.0+/-0.5V	4G	✓	✓			✓						✓	✓